



**BEACON**  
A Beacon Group Company

FLAWLESS SOLUTION FOR YOUR  
BIOCHEMISTRY WORKLOAD

## BONAVERA<sup>CHEM</sup> 200



Long Lasting Consistency

Precision & Accuracy

Powerful Backup

Ease of Use

Economy

FULLY AUTOMATED BIOCHEMISTRY ANALYZER

### SALIENT FEATURES

- Fully Automated, Discrete, Random Access Biochemistry Analyzer
- Throughput Up to 200 Test Per Hour with STAT facility
- On Board Laundry as well as On Board Cooling Facilities
- Advance User-Friendly Operating System
- Long Lasting Durable Optical System using IFCOS
- Integrated Barcoded Reagent System



## Reagent & Sampling Compartment

Equipped with **Onboard** cooling facility

**40** Reagent Position using dedicated bottle types

**40** sample position which can accommodate all types of sample cups, Primary Tubes, Blood Collection Tubes (Clot Activator)



## Multifunctional Probe for Reagent / Sample

Internally & Externally **Polished** to resist carryover

Specially designed **waterfall washing** system

Equipped with vertical collision protection & Auto depth adjustment



## Homogenous Mixing

Specially designed Teflon Coated Mixture with standardized step procedure for uniform mixing

Smooth Coating prevents water dropping & Cross Contamination

## Reaction Area & Optical System

44 Semi Permanent & Reusable Pyrex Cuvettes which can run for >1500 Tests

Reaction Volume from 150µl to 350µl

Cuvette washing by On Board Laundry facility using 2 Step 6 Stop Washing

Cuvette Integrity Check at all wavelengths before the analysis

Reaction Area with unique Air Incubation system to maintain the Temperature of  $37^{\circ} \pm 0.1^{\circ} \text{C}$

Integrated Fully Closed Optical System with 8 Short Bandwidth Interference filters.

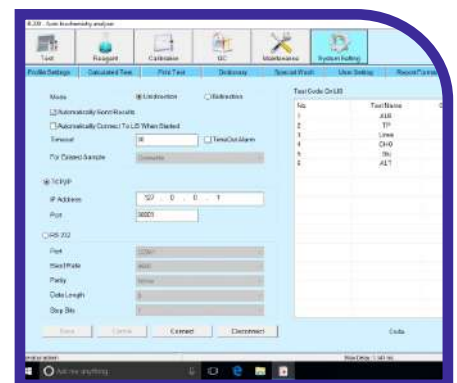


## Advance Operating System

Easy to Use Window Base operating System

On Line Reaction & Calibration Curve

Reagent Inventory management System



## Better Usability

Easy Lamp Assembly Changing Facility

Separate Power switch for refrigeration compartment



# TECHNICAL SPECIFICATIONS

**BONAVERA**<sup>CHEM</sup> 200

## Sample Unit

Sample Tray	- 40 Sample Positions
Sample Tube	- Micro cup & test tube, blood collection tube can also be used
Sample Volume	- 2-30 $\mu$ l, step by 0.1 $\mu$ l
Sample Barcode	- Optional

## Reagent Unit

Reagent Tray	- 40 reagent positions with constant temperature 2°C-14°C
Reagent Volume	- 20 - 300 $\mu$ l, step by 1 $\mu$ l
Reagent Needle	- Reagent volume detection, Collision protection

## Operating System

Operating System	- Windows 7, Windows 8, Windows 10
Data Processing	- Automatic Calibration, Blank deduction, Dirty cuvette memory, Editable, reference ranges, Customized sample dilution, Panel test.....
Report Printings	- 6 formats optional TCP/IP network interfacing

## Optical System

Light Source	- Halogen Lamp
Wavelength	- 340nm, 405nm, 450nm, 505nm, 546nm, 578nm, 630nm, 700nm
Absorbance Range	- 0-4
Resolution	- 0.0001 Abs

## Working Condition

Power Supply	- AC 110/220V +10% 50/60 Hz 650W Online UPS (230V) with isolated transformer 2KVA
Dimension	- 870 x 690 x 740 mm (LxWxH)
Weight	- 80 kgs

## READY TO USE SYSTEM

### PACK REAGENTS

ALBUMIN  
ALP  
AMYLASE  
ASO TURBI  
BILIRUBIN (TOTAL & DIRECT)  
BILIRUBIN (TOTAL)  
BILIRUBIN (DIRECT)  
CALCIUM  
CHOLESTEROL  
CK-NAC  
CREATININE ENZYMATIC  
CRP TURBI  
GLUCOSE  
HBA1C  
HDL DIRECT  
PHOSPHORUS  
LDH  
LDL DIRECT  
MAGNESIUM  
RF TURBI  
SGOT  
SGPT  
TOTAL PROTEIN  
TRIGLYCERIDES  
UREA UV  
URIC ACID  
GAMMA GT  
CONTROL & CALIBRATORS



FACTORY & REGISTERED OFFICE :  
424, NEW GIDC, KABILPORE, NAVSARI - 396 424 (GUJ) INDIA  
TEL : +91 - 74900 45631 | E-mail : exports@beaconindia.com  
Website : www.beaconindia.com | CIN No. : U24232GJ1990PTC013764

